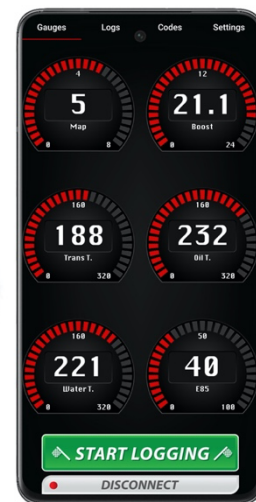


## 2018+ Lexus LS 500 3.5L Twin Turbo JB4 Install Guide

Last updated 8/27/2023

Use subject to terms and conditions posted at <https://burgertuning.com/pages/terms>

THIS PART IS LEGAL FOR USE ONLY IN COMPETITION RACING VEHICLES AS DEFINED UNDER CALIFORNIA LAW AND IS NOT LEGAL FOR USE IN ANY OTHER MOTOR VEHICLE. California law defines a "racing vehicle" as "a competition vehicle not used on public highways." (Calif. Health & Safety Code 39048) This part may only be used on competition racing vehicles operated exclusively on a closed course in conjunction with a sanctioned racing event. Competition-only motor vehicles may not be driven to a racing event on a public highway and must be transported on a trailer or other carrier. USE OF THIS PART IN ANY OTHER VEHICLE MAY SUBJECT YOU TO FINES AND PENALTIES FOR VIOLATION OF FEDERAL AND/OR STATE LAW, WILL VOID YOUR WARRANTY FROM BURGER MOTORSPORTS, INC, AND CAN VOID YOUR VEHICLE'S WARRANTY. It is your responsibility to comply with all applicable federal and state laws relating to the use of this part, and Burger Motorsports, INC hereby disclaims any liability resulting from the failure to use this part in compliance with all applicable federal and state laws.



OPTIONAL JB4 APP SHOWN

Remove the three black plastic engine bay panels (right, left, center front) held on by 19 plastic clips (push in to release the clips) Next remove center panel over engine by pulling up on the front and then out toward the front of the car.

Locate TMAP and MAP sensors.



Locate TMAP sensor on top of engine. TMAP is slightly left of center. TMAP sensor has four prongs. Unplug the factory TMAP sensor by pressing down the tab and sliding out the factory connector from the sensor. Plug the TMAP sensor (rainbow patch) into the sensor and plug the factory harness into the other side of the JB4 TMAP (rainbow patch) harness. Locate both MAP sensors. MAP sensors have three prongs. Both MAP sensors are on front of engine roughly above each other.

Unplug the factory MAP sensor by pressing down the tab and sliding out the factory connector from the sensor. Plug the MAP sensor (brown patch) into the sensor and plug the factory harness into the other side of the JB4 TMAP (brown patch) harness.

Secure JB4 box to the driver's side fender in front of the strut tower. Secure JB4 with four cable ties in open holes. The unit is suspended almost vertically along inner fender and strut tower.



Optional to reduce vibration: Apply some self-adhesive felt to the back of the JB4 near the top of the unit.



Secure the JB4 Bluetooth device to line running along the driver's side of the engine bay.



Optional OBDII port cable - tuck along windshield and body and run into engine bay.



Reinstall engine covers (some JB4 users prefer to only replace the main engine cover and leave off the plastic panels covering rest of the engine bay).



Need help? Ask the pros at [support@burgertuning.com](mailto:support@burgertuning.com)

If you've opted for the optional JB4 mobile adapter for smartphone integration attach that to the JB4 at this time. Open the enclosure and screw it in to the JB4 control board as shown.

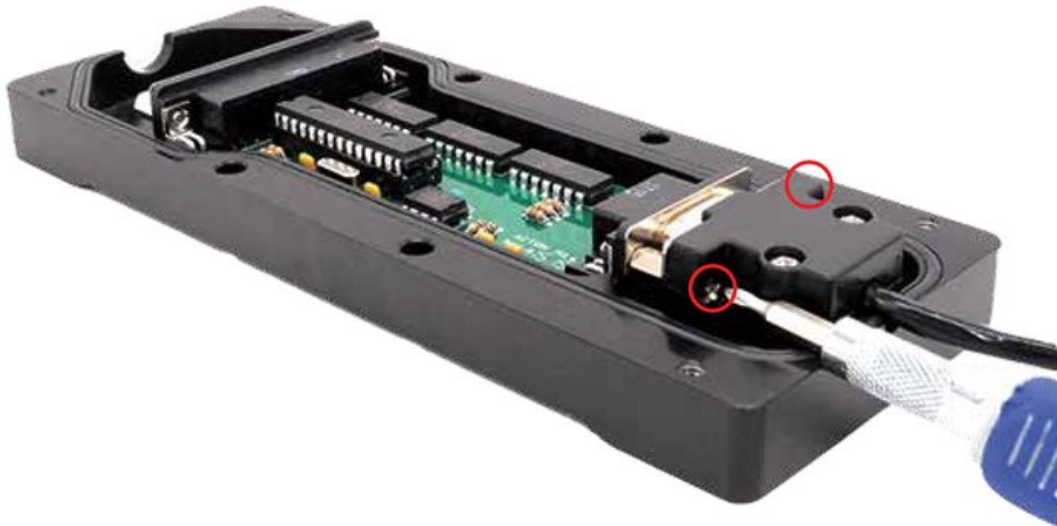
## **JB4 Connect Kit (Pinned Power) Install Guide**

04-13-2020

**1) Open the JB4 enclosure.**



**2) Install the DB9 connector and ensure both screws are secure.**





3) Put the JB4 enclosure back together.



**\*\*\*Very Important\*\*\***

4) Ensure the Connect Kit **\*IS NOT\*** in direct contact with the metal JB4 enclosure or any other nearby metal. Aim the smaller side of the Connect Kit (circled below) **DIRECTLY** towards the driver's seat for best signal quality. Failure to do this may lead to connectivity issues.



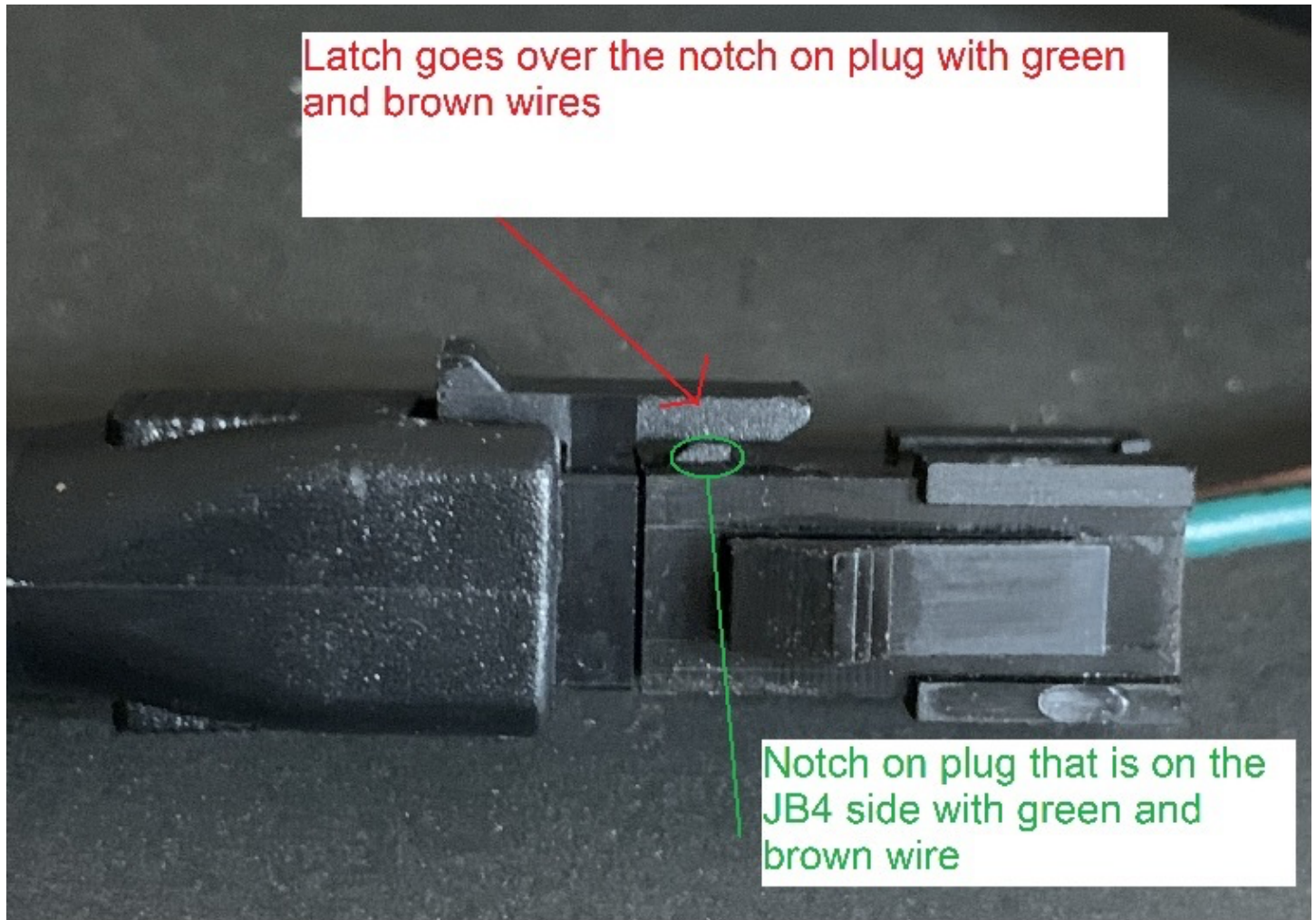
## **CANbus/OBDII connector: green/brown wires on JB4**

Vehicle can now be unlocked, and doors opened as OBDII can be installed/connected with vehicle awake. This optional connector attaches to the OBDII port to allowing the JB4 to take in additional advanced engine parameters to incorporate in to tuning and logging via the app.



It can be routed the “quick” way around the door jamb, or the “clean way” through a grommet in the firewall under the dashboard.

Plug the OBDII cable to the matching JB4 connector.



Note orientation should be as shown. If you're able to connect to the JB4 with the app but only see boost and map data, but no other data, then likely the OBDII cable is misaligned, loose, or damaged.

Installation is complete! The JB4 comes preset to map1 which is suitable for all 91+ octane fuel. Refer to the map guide within the app or the JB4tech.com JB4 support thread for the platform for the full map guide.