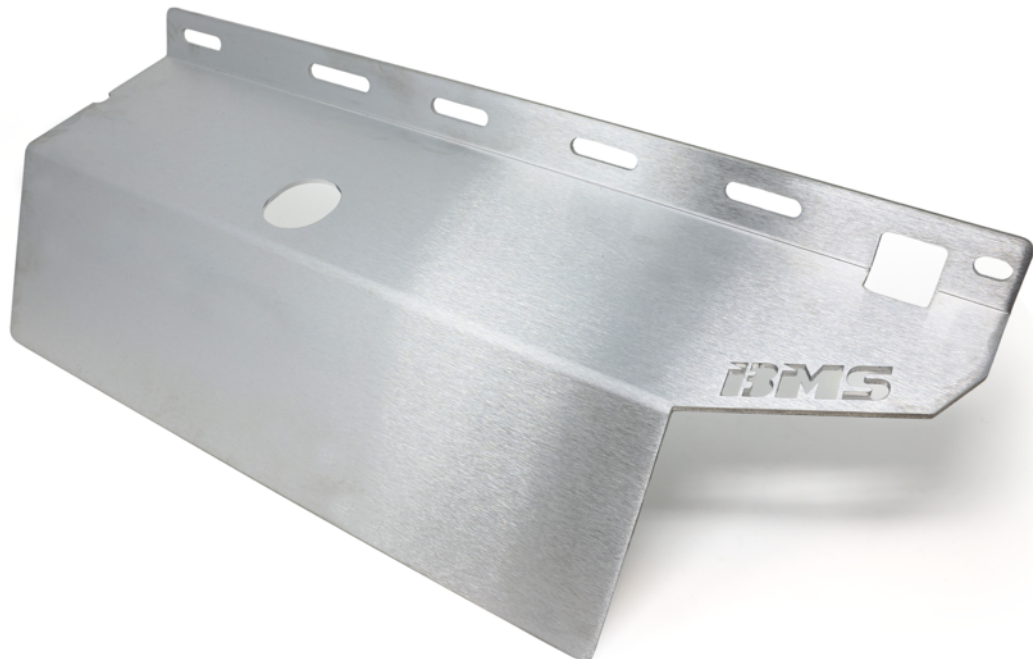


## B58 Heat Shield Install Guide

Last updated 1/14/2026

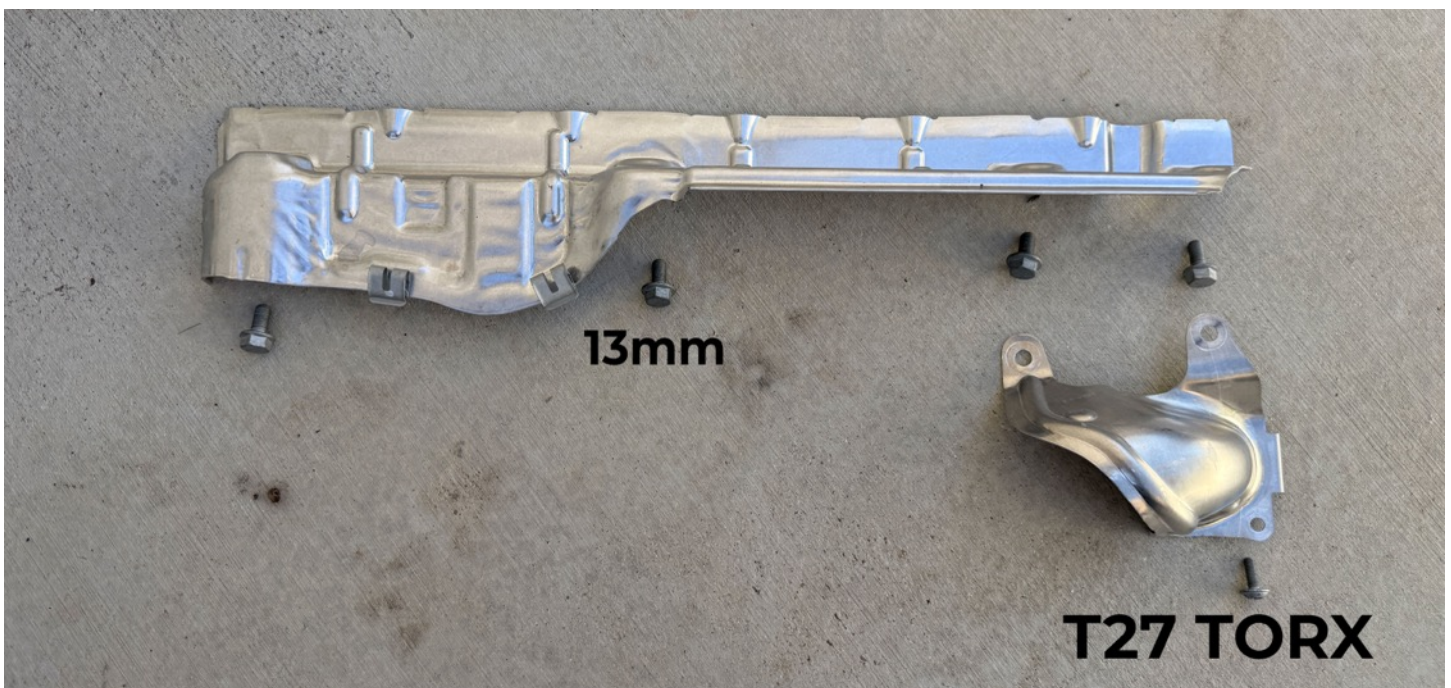
Use subject to terms and conditions posted at <https://burgertuning.com/pages/terms>

THIS PART IS LEGAL FOR USE ONLY IN COMPETITION RACING VEHICLES AS DEFINED UNDER CALIFORNIA LAW AND IS NOT LEGAL FOR USE IN ANY OTHER MOTOR VEHICLE. California law defines a "racing vehicle" as "a competition vehicle not used on public highways." (Calif. Health & Safety Code 39048) This part may only be used on competition racing vehicles operated exclusively on a closed course in conjunction with a sanctioned racing event. Competition-only motor vehicles may not be driven to a racing event on a public highway and must be transported on a trailer or other carrier. USE OF THIS PART IN ANY OTHER VEHICLE MAY SUBJECT YOU TO FINES AND PENALTIES FOR VIOLATION OF FEDERAL AND/OR STATE LAW, WILL VOID YOUR WARRANTY FROM BURGER MOTORSPORTS, INC, AND CAN VOID YOUR VEHICLE'S WARRANTY. It is your responsibility to comply with all applicable federal and state laws relating to the use of this part, and Burger Motorsports, INC hereby disclaims any liability resulting from the failure to use this part in compliance with all applicable federal and state laws.



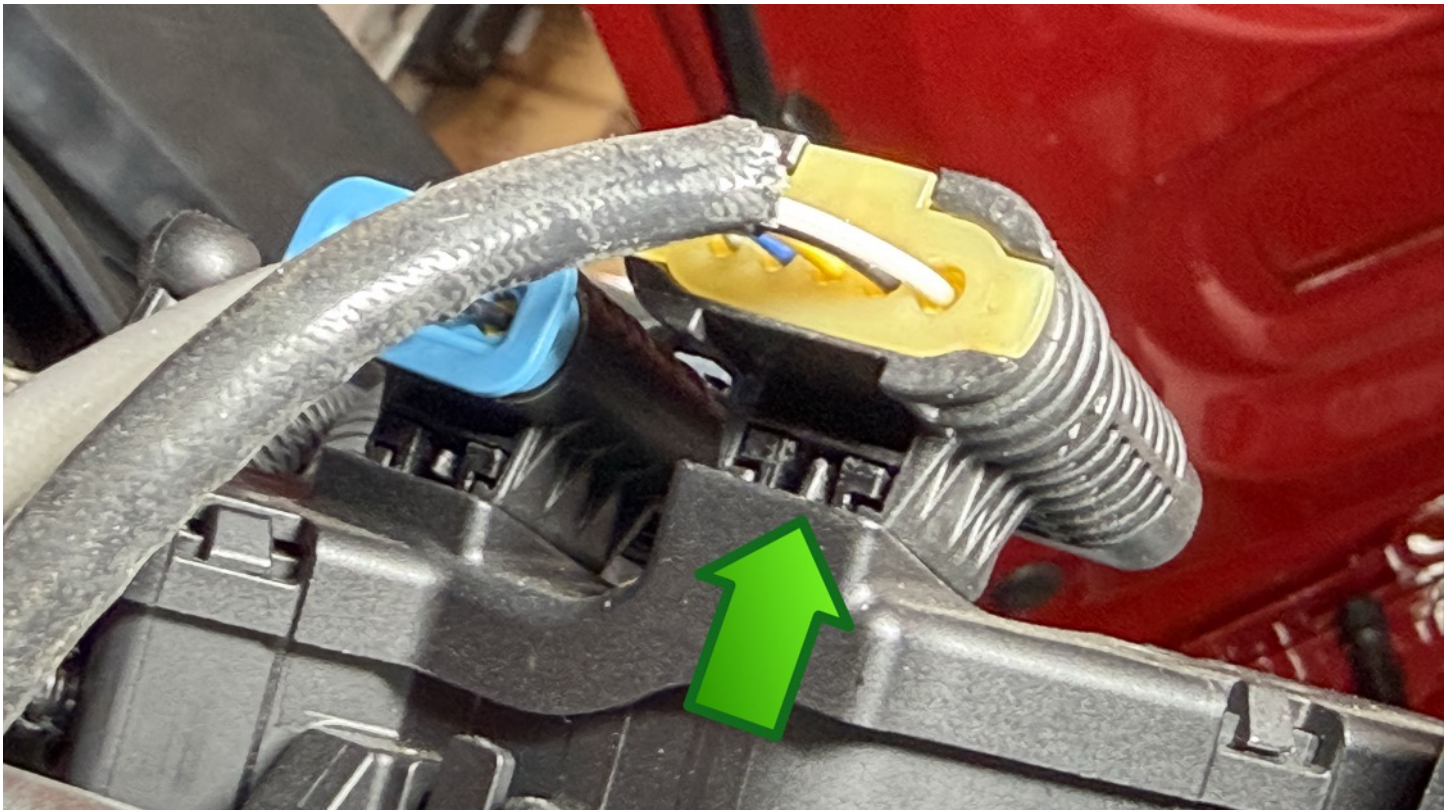
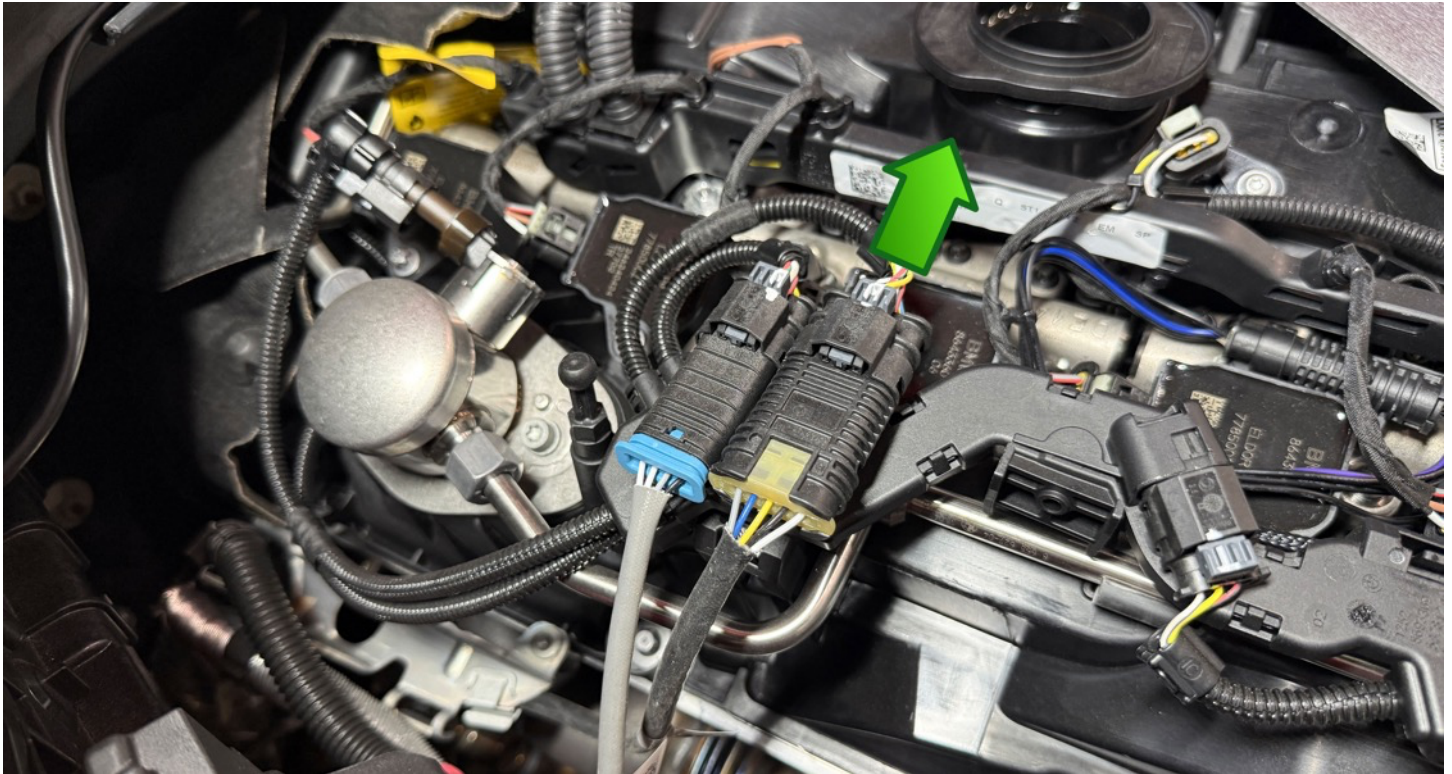
**⚠ ATTENTION:** Before starting installation lock the doors and place the key at least 20 feet away from the vehicle. Wait 10 minutes for the vehicle to go to sleep.

Remove the factory intake to gain access to the heat shield on the left side of the motor (facing the car). Next remove the four 13mm bolts and one T27 Torx bolt that holds the secondary manifold heat shield on. The four 13mm bolts will be reused with the new BMS heat shield.





Unplug the oxygen sensor connector by pulling the gray clip black and pinching it. Remove the connector from the vehicle by moving the small tab below the connector and pushing it towards the engine.





Then put the oxygen sensor through the hole in the heat shield and route the wire through the appropriate clip and back up to the mount and clip it on. Then plug it in. Replace the four factory 13mm bolts in the appropriate holes.

The finished product should look like this.

