

## 2022+ Acura TLX TypeS JB4 Install Guide

Last updated 1/20/2022

Use subject to terms and conditions posted at <https://burgertuning.com/pages/terms>

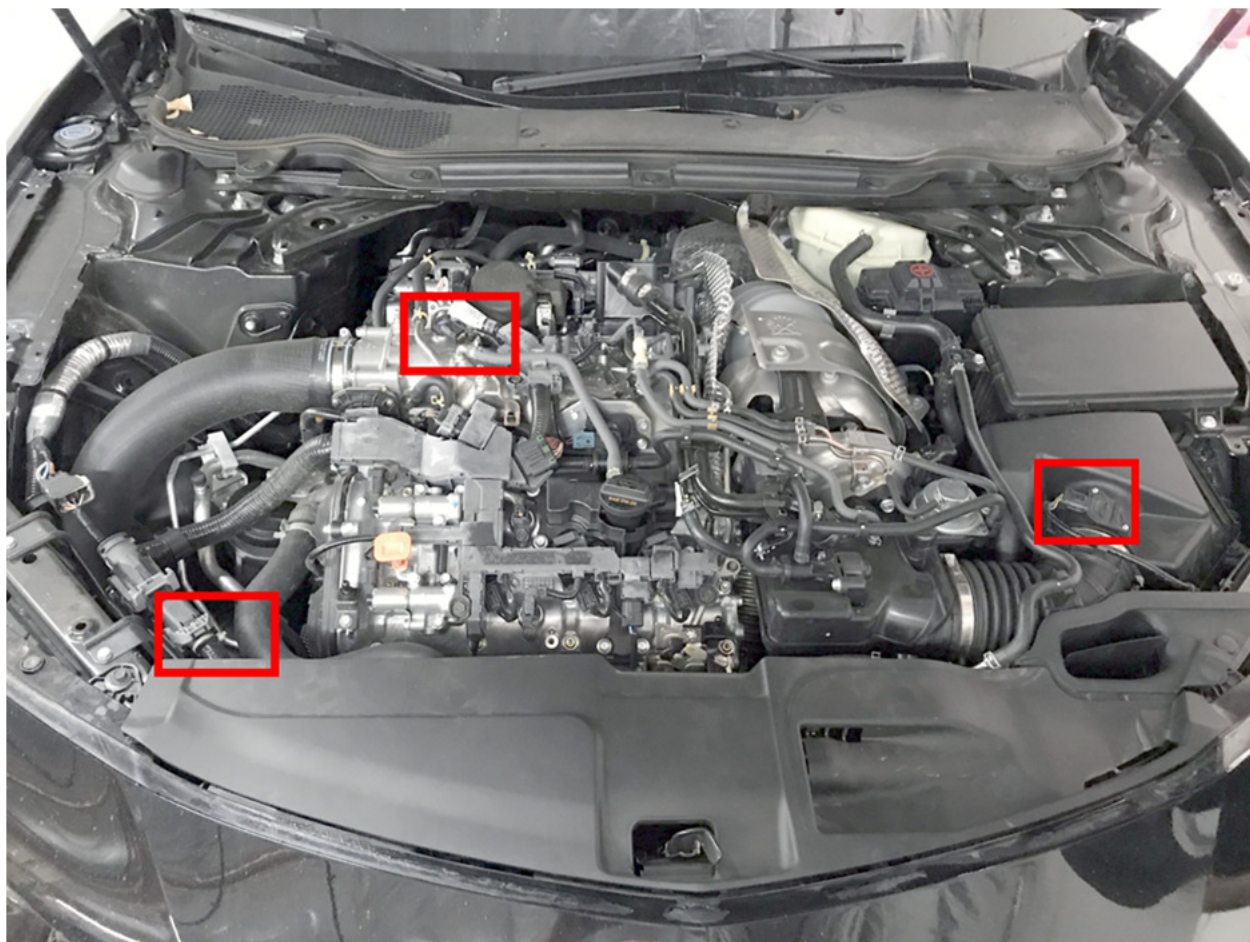
THIS PART IS LEGAL FOR USE ONLY IN COMPETITION RACING VEHICLES AS DEFINED UNDER CALIFORNIA LAW AND IS NOT LEGAL FOR USE IN ANY OTHER MOTOR VEHICLE. California law defines a "racing vehicle" as "a competition vehicle not used on public highways." (Calif. Health & Safety Code 39048) This part may only be used on competition racing vehicles operated exclusively on a closed course in conjunction with a sanctioned racing event. Competition-only motor vehicles may not be driven to a racing event on a public highway and must be transported on a trailer or other carrier. USE OF THIS PART IN ANY OTHER VEHICLE MAY SUBJECT YOU TO FINES AND PENALTIES FOR VIOLATION OF FEDERAL AND/OR STATE LAW, WILL VOID YOUR WARRANTY FROM BURGER MOTORSPORTS, INC, AND CAN VOID YOUR VEHICLE'S WARRANTY. It is your responsibility to comply with all applicable federal and state laws relating to the use of this part, and Burger Motorsports, INC hereby disclaims any liability resulting from the failure to use this part in compliance with all applicable federal and state laws.



OPTIONAL JB4 APP SHOWN

**Before starting installation lock the doors, and place the key at least 20 feet away from the vehicle. Wait 10 minutes for the vehicle to go to sleep.**

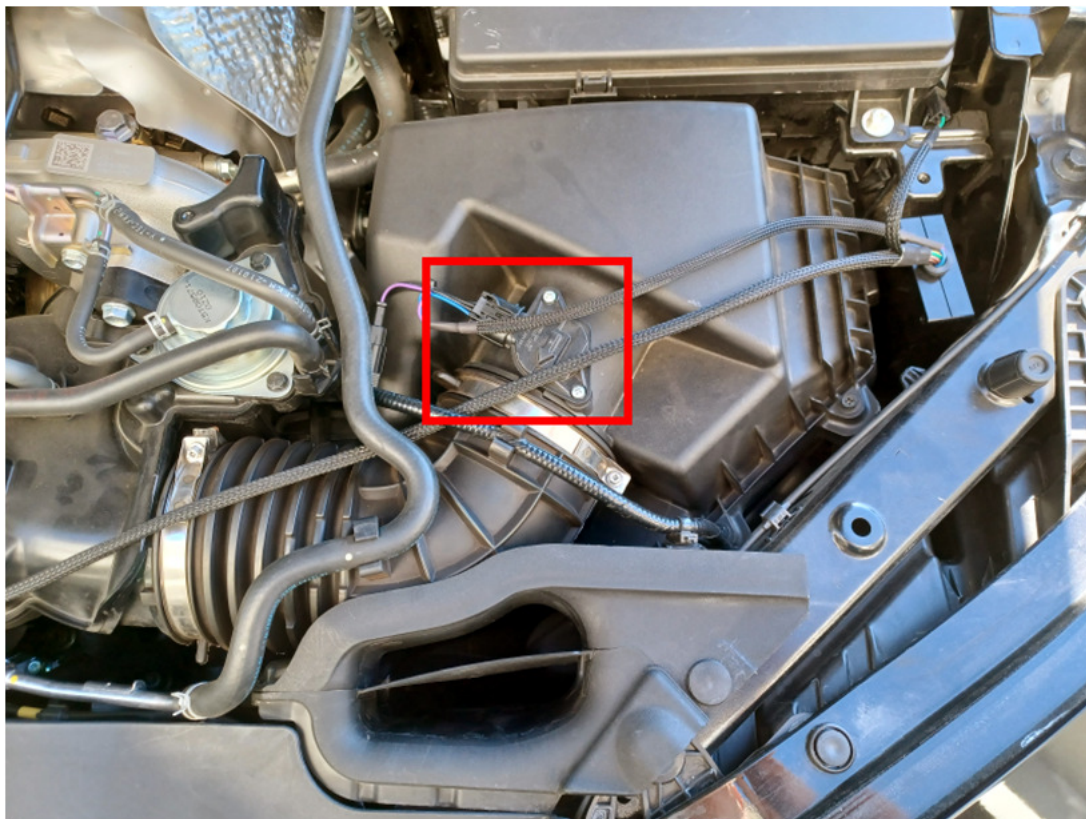
Lift off the plastic engine cover and place it aside. The JB4 connects to three sensors under the hood. The JB4 brown harness goes to the manifold sensor on top of the engine and the JB4 yellow/red wire goes the sensor down below on the intercooler piping. The green MAF connection attaches on top of the intake assembly. To attach unclip the factory sensor, plug the JB4 in to the sensor, and plug the factory harness in to the remaining JB4 harness connection completing the loop.



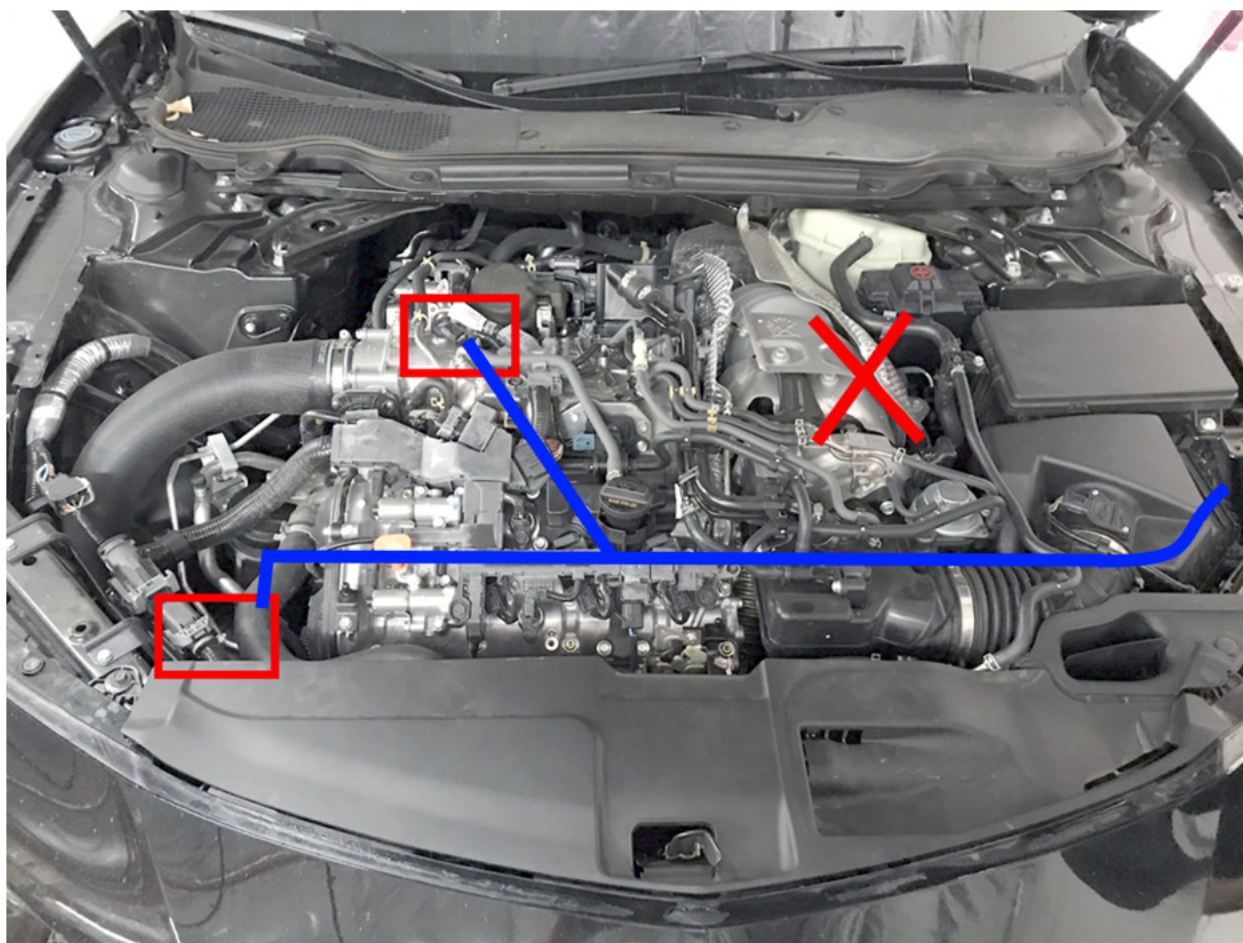
Close up of the sensor on the intercooler outlet.



Attach the JB4 MAF connection to the intake sensor as shown below.



Important: Do not route the JB4 harness anywhere near the turbocharger assembly or exhaust manifold as indicated with the red X in this photo. The blue line shows proper JB4 harness routing.



If you've opted for the optional JB4 mobile adapter for smartphone integration attach that to the JB4 at this time. Open the enclosure and screw it in to the JB4 control board as shown.

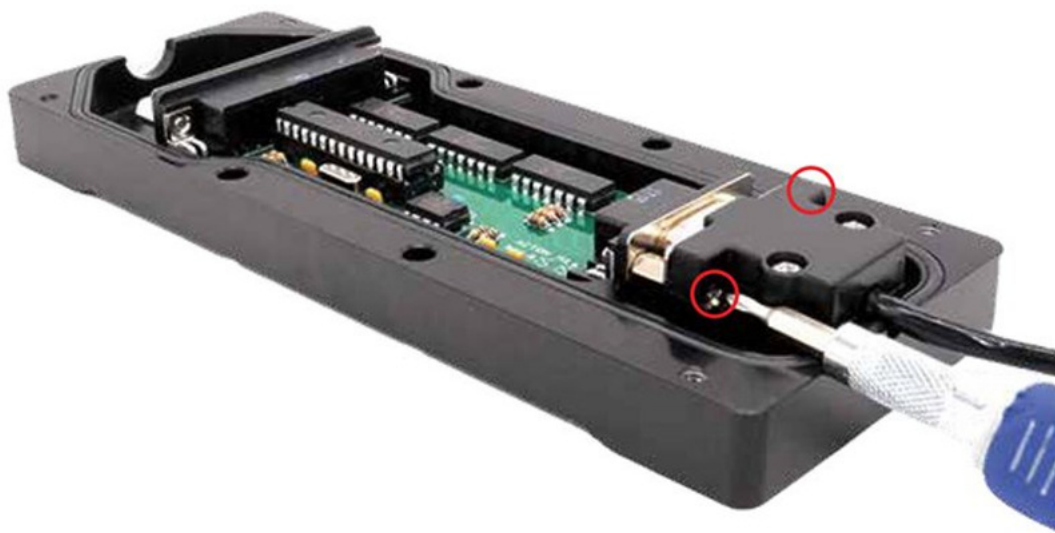
## **JB4 Connect Kit (Pinned Power) Install Guide**

04-13-2020

- 1) Open the JB4 enclosure.**



- 2) Install the DB9 connector and ensure both screws are secure.**



3) Put the JB4 enclosure back together.



### **\*\*\*Very Important\*\*\***

4) Ensure the Connect Kit **\*IS NOT\*** in direct contact with the metal JB4 enclosure or any other nearby metal. Aim the smaller side of the Connect Kit (circled below) **DIRECTLY** towards the driver's seat for best signal quality. Failure to do this may lead to connectivity issues.



Place the JB4 on the side of the airbox as shown and reinstall the factory engine cover.



### **CANbus/OBDII connector: green/brown wires on JB4**

Vehicle can now be unlocked, and doors opened as OBDII can be installed/connected with vehicle awake. This optional connector attaches to the OBDII port to allowing the JB4 to take in additional advanced engine parameters to incorporate in to tuning and logging via the app.



The OBDII can be run the “quick way” around the door jamb or the “clean way” through a grommet in the firewall

For the “quick” way” plug the OBDII cable in under the dash and route it across the door jamb as shown.



For the “clean” way follow the steps outlined below starting with attaching the end of the OBDII cable to a coat hanger or stiff metal wire.



Using a long screwdriver pry up the firewall grommet under the dash until you see daylight from the engine bay.



While holding up the grommet push the OBDII cable through the hole into the engine bay.



Remove the clips holding the windshield panel and maneuver the OBDII cable up to where you can reach it.



Finally plug the OBDII in to the JB4 harness as shown below. Ensure latch slides over clip. It is possible to force this connection incorrectly which will result in only boost/map appear in app and no other data showing until corrected.



### **Installation is complete!**

The JB4 comes preset to map1 which is suitable for all 91 octane and higher fuels. Refer to the map guide posted within the app and the n54tech TLX TypeS support thread for additional map details and use guidelines.